

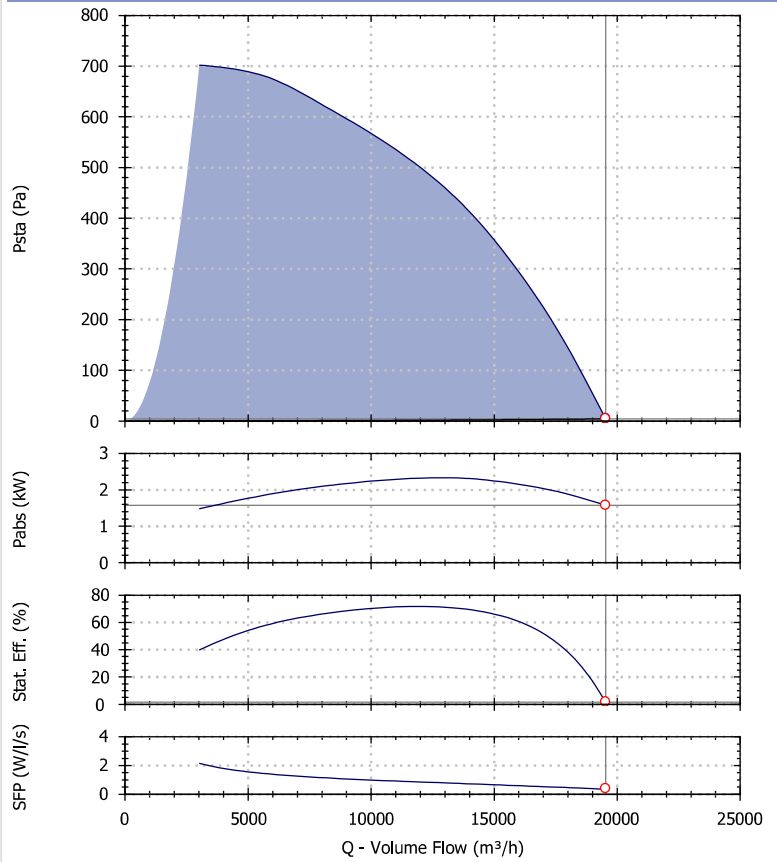
## Selection - FCP 756 T 19500 2,2kW

Product Code	1FC1750
Requested Air Volume	19 513 m <sup>3</sup> /h
Requested Pressure	4,24 Pa
Air Volume	19 531 m <sup>3</sup> /h
Static Pressure	4,25 Pa
Total Pressure	115 Pa
Velocity Pressure	111 Pa
Outlet Velocity	13,50 m/s
SFP	0,36 W/l/s
Fan Total Efficiency	39,7 %
Fan Static Efficiency	1,5 %
Air Properties	1,22kg/m <sup>3</sup> / 15°C/ 0m/ 50% RH
Fan Absorbed Power	1,58 kW
Temperature Range	-20°C +80°C
Fan Energy Index (FEI)	0,73

## Motor Selection

Electrical Supply	400/3/50
Motor Rating	2.20 kW
Enclosure/Class	55 / F
Frame Size	112
Poles number	6
Motor Speed	900 rpm
Full Load Current	5.7 A

## Fan Performance



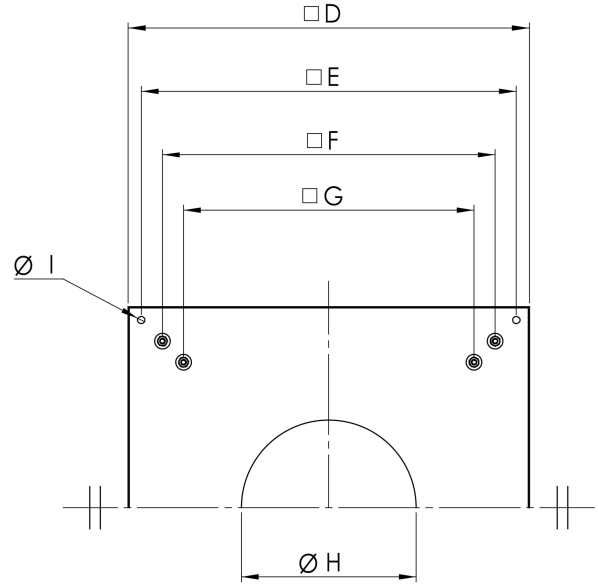
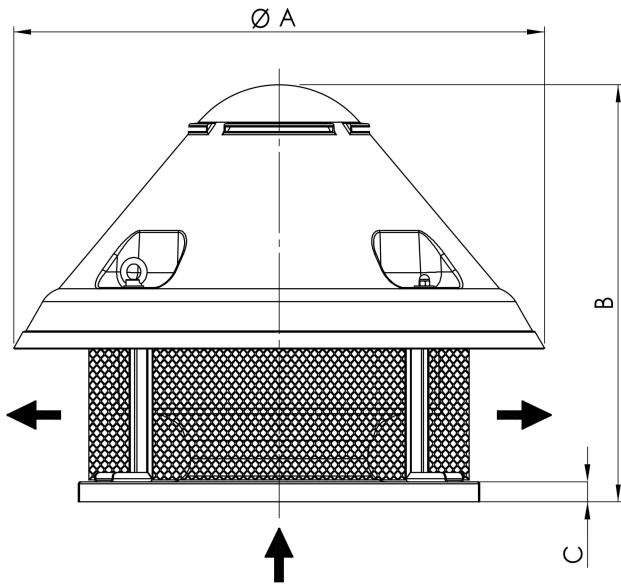
Performances refers to Maico Italia measures and may vary according to the installation type.

## Sound Performance

Hz	63	125	250	500	1k	2k	4k	8k	Overall
Lw	67	82	84	87	87	89	76	69	94
Lw(A)	41	66	75	84	87	90	77	68	93
LpA @ 3m	20	45	55	63	66	70	56	47	72

Sounds spectra refers to Maico Italia measures performed in our laboratories. The values provided are just indicative of the situation and Maico Italia declines every responsibility in case different levels measured by our customers as the installation types and the environmental variables may increase/decrease these values.

Drawing and Dimensions - FCP 756 T 19500 2,2kW

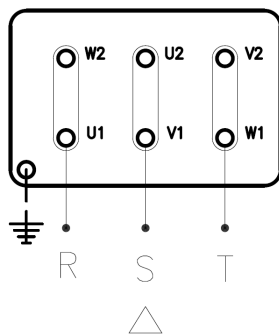


Key	(Kg)	B	C	D	E	F	G	OA	OH	OI
Value [mm]	170	980	465	930	870	775	665	1100	470	14

Drawings are indicative of the size of the selected fan. These dimensions may vary, even without any explicit advice. To have more accurate information contact your local agency.

Electric Wire Connections

230 V/3 Ph/50 Hz



400 V/3 Ph/50 Hz

