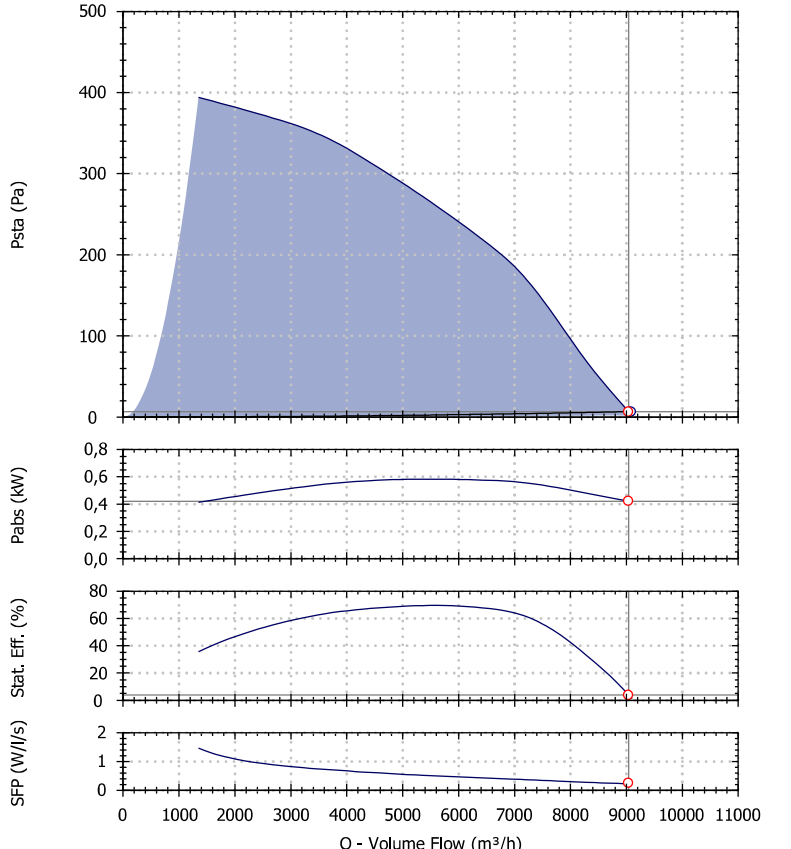


## Selection - FCP 566 T 9100 0,55kW Fan Performance

Product Code	1FC1560
Requested Air Volume	9 092 m <sup>3</sup> /h
Requested Pressure	6,73 Pa
Air Volume	9 042 m <sup>3</sup> /h
Static Pressure	6,65 Pa
Total Pressure	60 Pa
Velocity Pressure	53 Pa
Outlet Velocity	9,34 m/s
SFP	0,22 W/l/s
Fan Total Efficiency	35,8 %
Fan Static Efficiency	4 %
Air Properties	1,22kg/m <sup>3</sup> / 15°C/ 0m/ 50% RH
Fan Absorbed Power	0,420 kW
Temperature Range	-20°C +80°C
Fan Energy Index (FEI)	0,95

### Motor Selection

Electrical Supply	400/3/50
Motor Rating	0.55 kW
Enclosure/Class	55 / F
Frame Size	80
Poles number	6
Motor Speed	900 rpm
Full Load Current	1.7 A



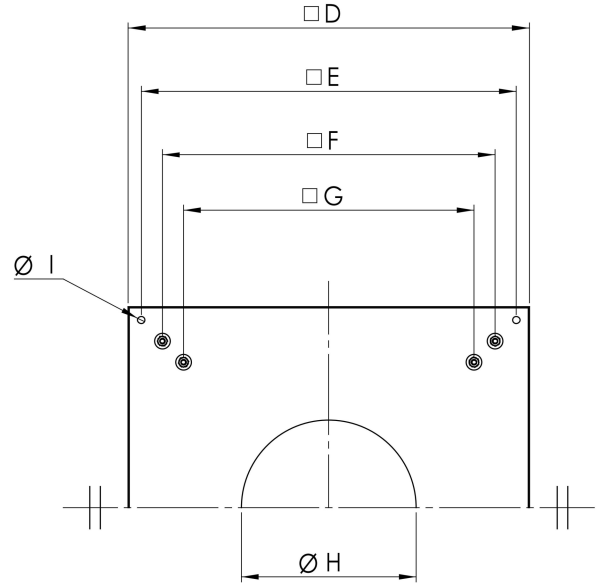
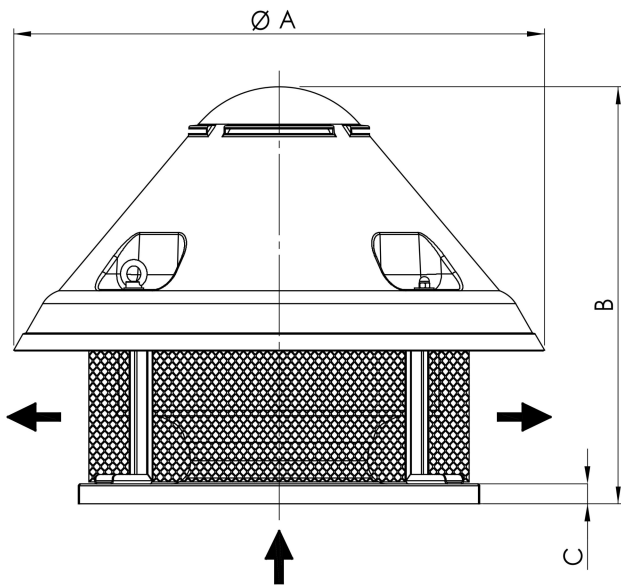
Performances refers to Maico Italia measures and may vary according to the installation type.

### Sound Performance

Hz	63	125	250	500	1k	2k	4k	8k	Overall
Lw	54	75	74	77	77	78	70	63	84
Lw(A)	28	59	65	74	77	79	71	62	82
LpA @ 3m	7	38	45	53	56	59	50	41	62

Sounds spectra refers to Maico Italia measures performed in our laboratories. The values provided are just indicative of the situation and Maico Italia declines every responsibility in case different levels measured by our customers as the installation types and the environmental variables may increase/decrease these values.

## Drawing and Dimensions - FCP 566 T 9100 0,55kW

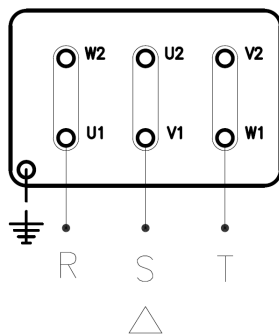


Key	(Kg)	B	C	D	E	F	G	OA	OH	OI
Value [mm]	70	830	381	760	710	630	550	1000	370	14

Drawings are indicative of the size of the selected fan. These dimensions may vary, even without any explicit advice. To have more accurate information contact your local agency.

## Electric Wire Connections

230 V/3 Ph/50 Hz



400 V/3 Ph/50 Hz

