

## Selection - FC 636 T

Product Code	1FC6661
Requested Air Volume	9 871 m <sup>3</sup> /h
Requested Pressure	7,31 Pa
Air Volume	9 864 m <sup>3</sup> /h
Static Pressure	7,30 Pa
Total Pressure	54 Pa
Velocity Pressure	47,2 Pa
Outlet Velocity	8,79 m/s
SFP	0,30 W/l/s
Fan Total Efficiency	17,9 %
Fan Static Efficiency	2,4 %
Air Properties	1,22kg/m <sup>3</sup> / 15°C/ 0m/ 50% RH
Motor Input Power	0,835 kW
Temperature Range	+100°C
Fan Energy Index (FEI)	1,06

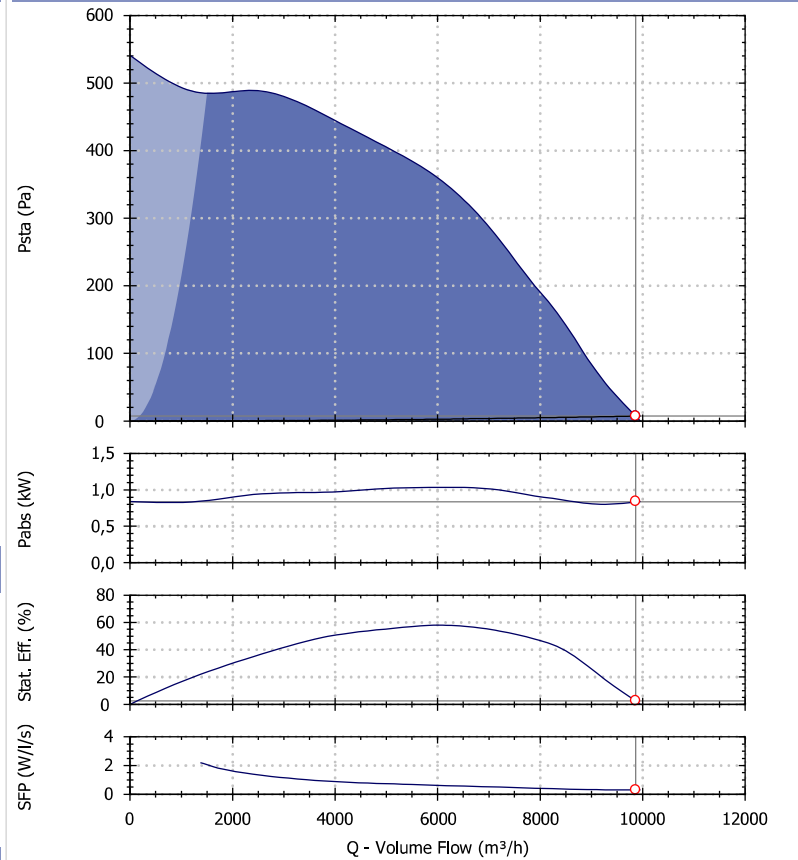
## Motor Selection

Electrical Supply	400/3/50
Motor Rating	1.10 kW
Enclosure/Class	55 / F
Frame Size	90L
Poles number	6
Motor Speed	960 rpm
Full Load Current	3.40 A

## ERP Information

ERP Compliance	Exempt
Type	-
Regulation	-
Category of measure	-

## Fan Performance



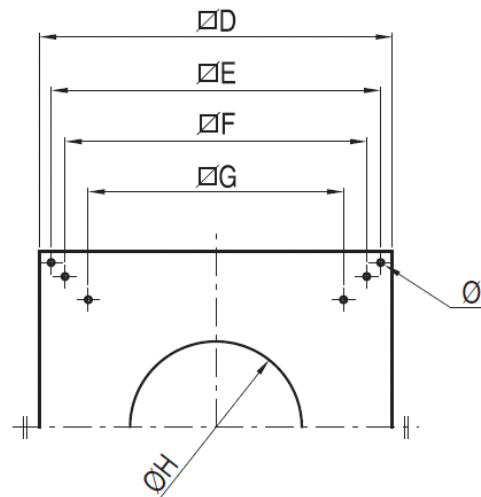
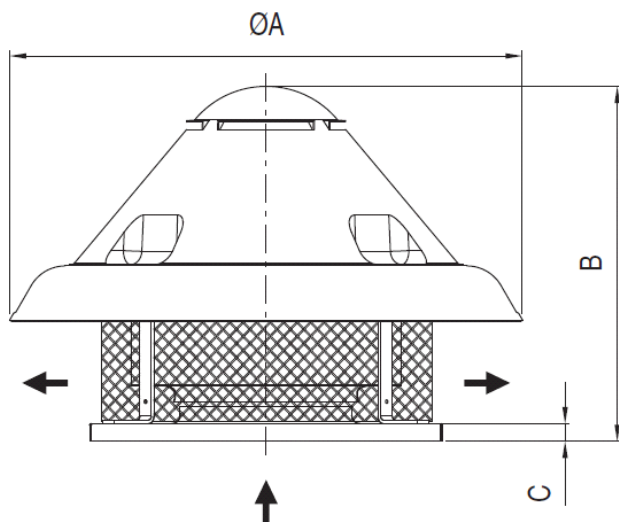
Performances refers to Maico Italia measures and may vary according to the installation type.

## Sound Performance

Hz	63	125	250	500	1k	2k	4k	8k	Overall
Lw	83	84	83	79	77	74	68	61	89
Lw(A)	57	68	74	76	77	75	69	60	82
LpA @ 6m	30	41	47	49	50	48	42	33	56

Sounds spectra refers to Maico Italia measures performed in our laboratories. The values provided are just indicative of the situation and Maico Italia declines every responsibility in case different levels measured by our customers as the installation types and the environmental variables may increase/decrease these values.

Drawing and Dimensions - FC 636 T

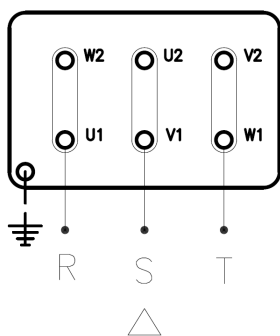


Key	ΦA	B	C	D	E	F	G	ΦH	ΦI	kg
Value [mm]	1300	850	38	930	870	775	665	430	14	75

Drawings are indicative of the size of the selected fan. These dimensions may vary, even without any explicit advice. To have more accurate information contact your local agency.

Electric Wire Connections

230 V/3 Ph/50 Hz



400 V/3 Ph/50 Hz

